



PRODUCT CATALOG | 2021

SMART LIGHTING SOLUTIONS

OUTDOOR & INDOOR & SMART CONTROL

www.morstar.com



Morstar Inc

12868 Farmington Road Livonia, Michigan 48150

Phone: +1-877-977-3732, 734-469-4225

Fax: +1-866-936-1782

Email: sales@morstar.com

susanna@morstar.com

Web: www.morstar.com



VISIT OUR WEB

Illuminating the world, creating a smart, healthy life.

ABOUT MORSTAR

Since 1999, Morstar has been a manufacturer of premium quality lighting and is dedicated to providing certified energy-efficient lighting solutions for commercial and industrial use . Our headquarters is located in Livonia, Michigan, a suburb of Detroit.

In recent years, we implemented a complete line of revolutionary smart LED lighting products using advanced technology, which helps promote healthy lighting solutions in commercial and industrial applications.

Our main products are commercial and industrial LED lighting. We are among the industry's leading designers and suppliers of energy-efficient lighting systems for commercial, office, retail, institutional, and educational applications. We are capable of offering professional lighting products for the lighting solution required.

We also have solutions. We have implemented one of the world's leading lighting design software programs for planning, calculating, and visualizing indoor and outdoor LED lighting projects.

Morstar is committed to true innovation by employing state-of-the-art design and engineering technologies that meet or exceed international standards of design, quality, performance, and energy efficiency. We have earned the respect of engineers, designers, lighting distributors, architects, project owners, and related professionals worldwide. Join us on the path of innovation and brilliance!



PRODUCT CONTENTS

BRAND CONCEPT	—	01-02
SMART CONTROL SYSTEM	—	03-08
LED AREA LIGHT	—	09-12
LED UFO HIGH BAY	—	13-16
LED LINEAR HIGH BAY	—	17-18
LED WALL PACK LIGHT	—	19-22
LED CANOPY LIGHT	—	23-24
LED VAPOR TIGHT LIGHT	—	25-26
LED TROFFER LIGHT	—	27-28
LED GROW LIGHT	—	29-32
LED UVC GERMICIDAL LIGHT	—	33-34
LED DUSK TO DAWN LIGHT	—	35-36
LED GU24 LAMPHOLDER	—	37-38
WIRELESS CONTROL (CONTROLLER / SENSOR)	—	39-44

Human Centric Lighting



Solid industrial base and sufficient funding for light and health research in North America. Mariana G.Figueiro, Mark S. Rea, Steven W. Lockley, Barbara A. Plitnick, Jennifer A. Veitch, and other scholars contributed a lot to the research. The Illuminating Engineering Society (IES) has established a research committee on light and health.

Illumination parameters such as illumination, color temperature, stroboscope, and glare control have a great influence on visual function, visual comfort, safety, and visual aesthetic feeling. Therefore, the use of a high-quality lighting plays a decisive role in a quality of life. .

As the modern man spends most of his time doing indoor activities, improving his indoor circumstances has never been more important. The positive impacts of good lighting on the quality of life are crucial: it enhances human health, productivity, and comfort. Human-centered lighting makes the human habitation space an inspiring space that inspires greater productivity and supports the ability to concentrate while also increasing happiness.

Life begins with light.

The search for light is the most active area of human sciences.



“We are passionate about lighting. We want to illuminate the world and create a smart, healthy life.”

— Catherine Su | President

Susanna Su | General Manager

Our Values:

Morstar specializes in producing beautiful, environmentally-friendly, energy efficient, and practical solutions for all kinds of interior and exterior projects. We have professional experience in lighting design, light health, and luminaire manufacturing.

We thoroughly explored the design challenges of our customers with sensitivity and originality, resulting in integrated, creative, and appropriate solutions that meet their specific lighting needs.

Our realized projects demonstrate both an awareness of human issues as well as design sensitivity; our work philosophy emphasizes collaboration and customer input, combined with dedicated personal service.

"Illuminating the world, creating a smart, healthy life." is our motto. We believe in the power of lighting.

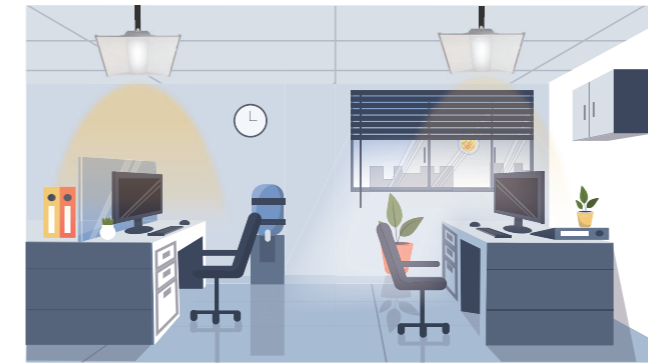




Amanda is the a senior partner in a firm in a borough of a major metropolitan area. Her firm was in the middle of an economic boom, when staff needed to be in shape and there were a lot of visitors coming and going. She faced a problem that many managers face--

- Temporarily empty aisle that are always fully open on;
- When employees work overtime, the lights will be turned on excessively;
- When natural lighting is abundant, long and bright indoor light causes energy waste.

Now Amanda has installed Morstar's lighting control system. "Now I have the opportunity to create a positive, comfortable working environment for my employees, users, and partners," she said in our return interview.

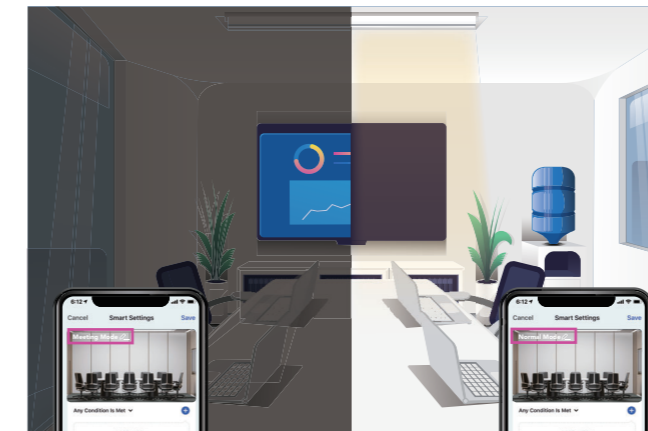


Optimum energy savings are achieved when combining daylight harvesting with presence control. Energy savings in such a scenario are typically between 40 % and 60 %. For this function, it needs to be combined with Morstar adjustable color temperature luminaires. Morstar's sensors provide presence information and lux level, allowing implementation of this functionality without any additional cost. Amanda was pleased because her smart office lighting system was using a daylight harvesting sensor to minimize energy consumption and to give her employees a comfortable work experience.

The Office Resources You Will Ever Need

"Now I have the opportunity to create a positive, comfortable working environment for my employees, users and partners," she said in our return interview.

Amanda | One of The Senior Partners at The Firm

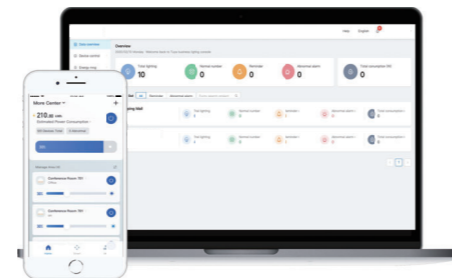


Different usage scenarios of a room might require different lighting scenarios to create a specific effect or ambiance. A simple example is a meeting room, where during a typical meeting, all lights must be on, while during a presentation, lights must be dimmed down with the lights near the screen switched off. Amanda can comfortably configure multiple scenes by adjusting the dimness of the light and the color of each lamp or group of lamps in a room through custom scene mode. Once defined, the scene can be manually controlled via any of The Morstar's apps or automatically recalled via scheduling.



Since Amanda is not able to physically be everywhere at once, she needs a way to monitor how each room is being utilized. Using Morstar's software, she creates a heatmap and the current heat distribution with real-time statistics to assist users in energy conservation control. Her control system generates robust data showing her which spaces are currently in use and historical data on which spaces are most and least utilized. It can also provide effective data support for Amanda's decision space deployment by statistical historical occupancy data and comparison data.

The office is no longer just a place of work. Modern offices generally have meeting areas, office areas, leisure areas, and so on. The flexible way of working has new requirements for the modern office and the lighting required within.



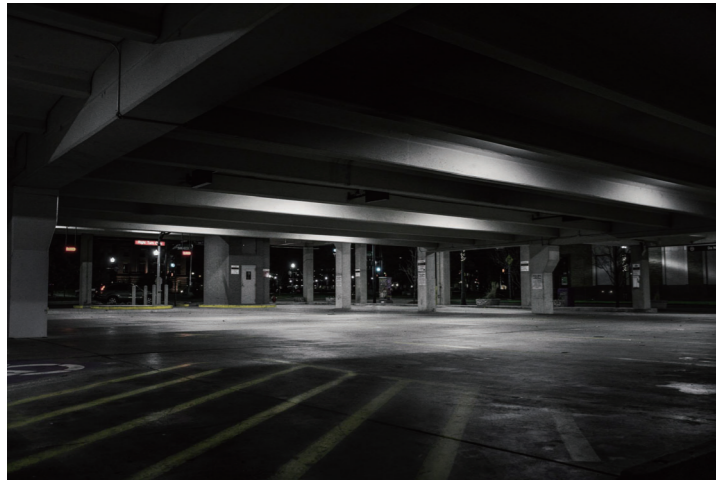
The most appropriate lighting is an indispensable element of creating a comfortable and productive office environment for employees. The best way to achieve a healthy light environment is Human Centric Lighting, with appropriate hues and reaction to natural light, which has been shown to boost productivity by 12%.

For that reason, more and more office lighting systems have embraced smart lighting, and in doing so, have enabled a more comfortable environment for employees. **Smart lighting boosts productivity and creates a functional and welcoming atmosphere.**

It also offers many possibilities to give a beautiful aesthetic to any workspace with a vast range of design features that can be programmed to perform any number of tasks and scenarios as needed. To take a simple example, when meeting in a conference room, lights can be dimmed to ensure that glare against the screen is minimized, retaining attendees' comfort.

In the past, the parking lot or garage lighting you see may have been like this

I.



Some closed parking garages use low-quality lighting, which is prone to dark areas. Dim lights or shadows may prevent pedestrians from being detected by drivers, which is easy to cause traffic safety hazards and crimes.

II.



Vehicles enter the indoor parking garage from an outdoor daylight environment, and there is no light transition zone. Human eyes cannot adapt to the low-light environment immediately, making it difficult for people to distinguish obstacles.

III.



The contrast of the lighting is too high or too low, and the lighting uniformity of the entire parking lot is not enough. The interaction between vehicles and pedestrians will become difficult, resulting in an unsafe environment.

Excessive lighting of the ground parking lot that is open to the outside will cause light intrusion problems and cause glare nuisance to neighboring owners.

With the development of LED technology and the application of more humane lighting design, creating an intelligent, energy-saving and efficient lighting environment has become the main goal of the current and future development of parking lots or garage lighting.

Now, the design concept of the parking lot and garage is time to change

Here are 4 reasons why

- ① High-quality lighting can improve the comfort, safety, and pleasure of drivers and pedestrians.
- ② High-quality lighting can save operating and maintenance costs to the greatest extent.
- ③ High-quality lighting makes the parking lot or garage smarter and more promising.
- ④ Mostar Lighting's service is the best choice to help your business succeed.

Smart Indoor Parking Garage Lighting Solution



LED FIXTURES+INTEGRATED SENSORS+WALL SWITCH+SMART CONTROLLER SYSTEM



LED Vapor Tight



LED Canopy Tight



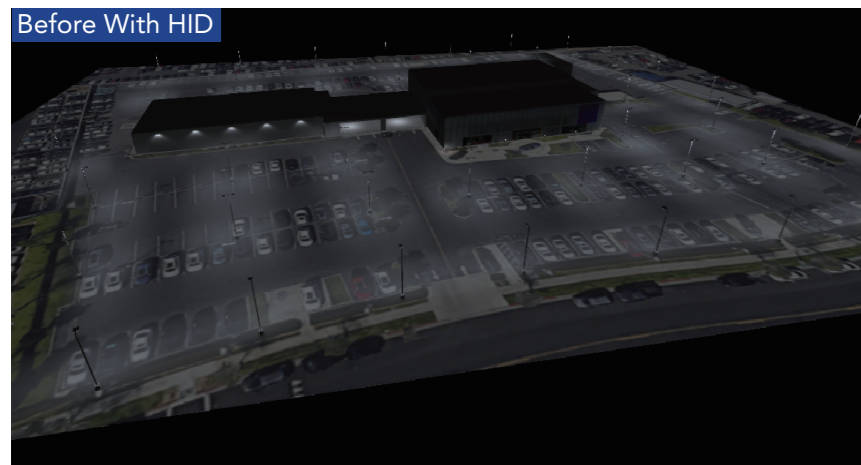
Bluetooth Wall Switch

Using sensors at key points in the garage, combined with high-efficiency LED luminaires and intelligent lighting systems, can not only improve the experience of drivers and pedestrians but also maximize the life of the luminaires and save energy. At the same time, smart LED luminaires can remind pedestrians to pay attention to the moving space in the garage, which has the additional benefit of improving personal safety. The result of this is excellent energy efficiency and rapid return on investment, as well as an excellent visual experience.

Smart Outdoor Parking Lot Lighting Solution

We provide a variety of solutions suitable for all your lighting applications.

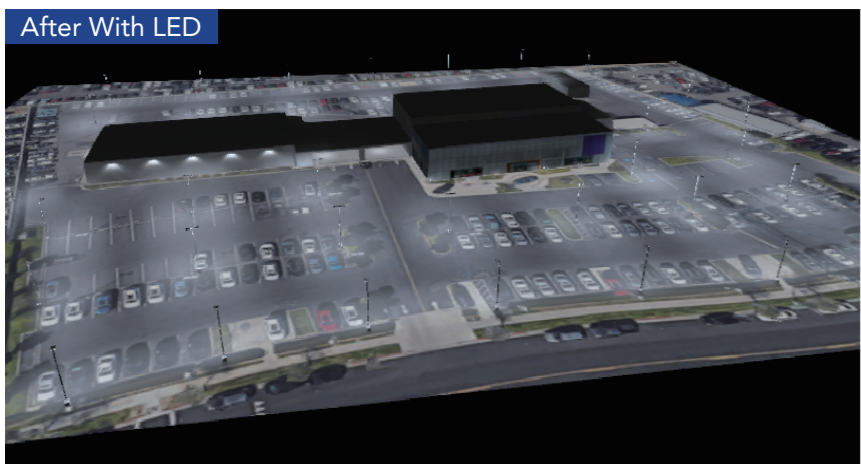
The below un-altered photographs of "Before" and "After" installations demonstrate LEDs superior characteristics of lighting. LED performance provides better visual acuity and better uniformity which is all achieved while using less energy. Morstar Lighting's LED fixtures integrate the latest LED advancements and deliver optical performance that can perform as well as, and in most cases, better than traditional HID fixtures.



HID System	HID Wattage	HID Life Hours
150w PSMH	185	15,000
250w PSMH	283	15,000
320w PSMH	361	20,000
400w PSMH	459	20,000
100w HPS	130	24,000
250w HPS	295	24,000
400w HPS	464	24,000

The parking area was lit with 400w HPS fixtures mounted in double configuration at 28 feet. These fixtures were replaced with Morstar Lighting's 200w fixtures on the existing poles. The results included energy-savings of 55% over HPS, improved overall uniformity and a safely illuminated parking area.

- NOTE:
1. Hours of life based on 50% mortality.
 2. Actual wattage should be confirmed with site specific lighting calculations.
 3. LED hours of life based on 70% of initial illumination.

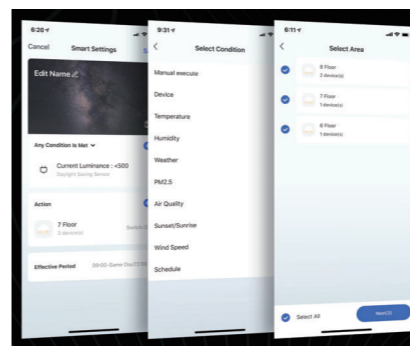
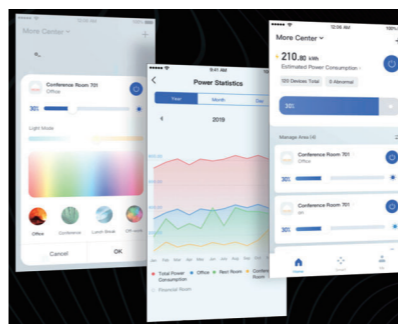
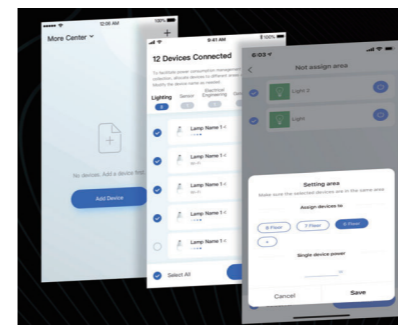


LED wattage ²	LED life Hours ³	Savings
75	60,000	60%
150	60,000	47%
200	60,000	45%
200	60,000	56%
75	60,000	43%
150	60,000	50%
200	60,000	57%

MORLINK Smart Led Control System

Based On Tuya AI+IoT Platform

Morstar Lighting has launched an innovative wireless control system based on Tuya Bluetooth smart control technology. No gateway, whether it is single-point access or mesh networking access, it will be more secure and faster.



Adding Multiple Devices

- Automatically nearby devices in pairing mode and adds them.
- Quickly assign new devices to areas and groups.
- Multiple device types available, including lighting fixtures, wall switches, sensors, remote controllers etc.
- Create scenes to automatically control devices using sensors, switches and other criteria.
- Control multiple protocols in one app.

Devices Management and Control

- Control all of the devices in a building, floor, group etc. at once.
- Shortcut buttons to change power, brightness, CCT and color.
- Classify the devices by categories.
- Calculation of the total use time of each device and replacement reminders.
- Alarm for abnormal conditions.
- All group and device status displayed

Scene and Automation

- Create automations based on multiple trigger types including sensors, switches, schedules, and settings of other devices.
- Set the effective time of the scene.
- Receive a push notification when a scene is activated.
- Create multiple conditions to trigger scenes. Control multiple devices and areas at once.
- Can be used to implement energy-saving strategies and to calculate the results.



PRODUCT DESCRIPTION:

LED area light adopts a new installation combined boom, sliding clamp and 180° adjustable steering knuckle, make it more flexible lighting direction to deal with different lighting scenes. At the same time, the lighting body can use 2835/3030LEDs lamp beads, which can produce 140lm per watt to meet the needs of users in a wider range of outdoor areas. The shell adopts a heavy-duty aluminum process and is coated with a polyester powder protective layer, which has a good heat dissipation and compression structure, as well as anti-corrosion and rust-proof characteristics.

FEATURES:

- High efficiency LED driver, the wide range input voltage AC100-277V (1-10V Dimmer) or AC120-347V, surge protection 6KV
- Lumileds LED high luminous efficiency and long life
- Die-cast aluminium design, better cooling and easy replacement, light quality
- Excellent optical design, greatly improve the light utilization and evenness
- Photocell Control Available (Optional)



Item No.	Power	Input Voltage	Color Temperature	Power Factor	Luminous Flux
EPL-801A	100W	100-277V/ 120-347V	4000K / 5000K / 5700K	>0.95	13,000 lm
EPL-802A	150W	100-277V/ 120-347V	4000K / 5000K / 5700K	>0.95	19,500 lm
EPL-803A	200W	100-277V/ 120-347V	4000K / 5000K / 5700K	>0.95	26,000 lm
EPL-804A	240W	100-277V/ 120-347V	4000K / 5000K / 5700K	>0.95	31,200 lm
EPL-805A	300W	100-277V/ 120-347V	4000K / 5000K / 5700K	>0.95	39,000 lm



PRODUCT DESCRIPTION:

A stunning blend of performance, value, and aesthetics, the 700A series area lights are available in a wide range of lumen packages to address a variety of outdoor lighting needs such as roadways, parking lots, and other vast outdoor areas. IP66-rated luminaire delivers a minimum of 130 lumens per watt which replace up to 1000W MH outdoor lighting. Compared with traditional fixtures, the service life is longer and the energy consumption is lower, which can save a lot of electricity and maintenance costs.

FEATURES:

- 5 Types of Mounting Brackets, easy to exchange different bracket
- High Quality Drivers Meawell & Inventronics 100-277Vac, 277-480V
- Distribution Optional: Type III, Type IV, Type V
- High Performance SMD3030 Chips, 130lm/W, L70>100,000 hours
- High Efficiency PC Lens, Type3, Type4, Type5 Distribution
- Surge Protection 10KA
- IP rating IP65



Item No.	Power	Input Voltage	Color Temperature	Power Factor	Luminous Flux
EPL901E-100W	100W	120-277V	4000K / 5000K / 5700K	>0.95	13,000 lm
EPL902E-150W	150W	120-277V	4000K / 5000K / 5700K	>0.95	19,500 lm
EPL903E-200W	200W	120-277V	4000K / 5000K / 5700K	>0.95	26,000 lm
EPL904E-240W	240W	120-277V	4000K / 5000K / 5700K	>0.95	31,200 lm
EPL905E-300W	300W	120-277V	4000K / 5000K / 5700K	>0.95	39,000 lm



PRODUCT DESCRIPTION:

Combining long life and outstanding efficacy up to 140Lm/W, MORSTAR UFO high bay light offers a cost-effective solution to maximize energy and maintenance savings. These fixtures instantly deliver brilliant white light, easy-to-install LED UFO high bay luminaires to have a sleek, robust design that meets a variety of application needs. Bluetooth microwave motion sensors can be installed and combined with Morlink wireless lighting control system to achieve intelligent lighting control.

LED UFO HIGH BAY



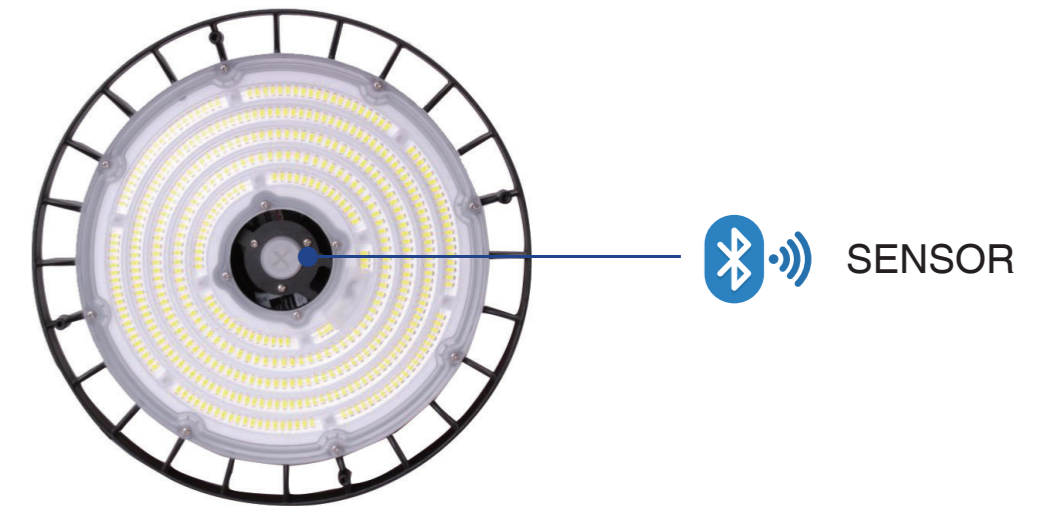
 SENSOR

FEATURES:

- Fins design, advective holes, and grooves in each fin, good for heat dissipation
- The wide input voltage range AC100-277V (1-10V dimming)
SOSEN driver, LUMILEDS chips light source
- Professional light distribution technology, and the beam angle of 85°/110° is optional
- Lightweight and small size, save about half shipping costs



Item No.	Power	Input Voltage	Color Temperature	Power Factor	Luminous Flux
HHB401A-100W	100W	100-277V	4000K/5000K/5700K/6500K	>0.9	14,000 lm
HHB402A-150W	150W	100-277V	4000K/5000K/5700K/6500K	>0.9	21,000 lm
HHB403A-200W	200W	100-277V	4000K/5000K/5700K/6500K	>0.9	28,000 lm
HHB404A-240W	240W	100-277V	4000K/5000K/5700K/6500K	>0.9	33,600 lm



PRODUCT DESCRIPTION:

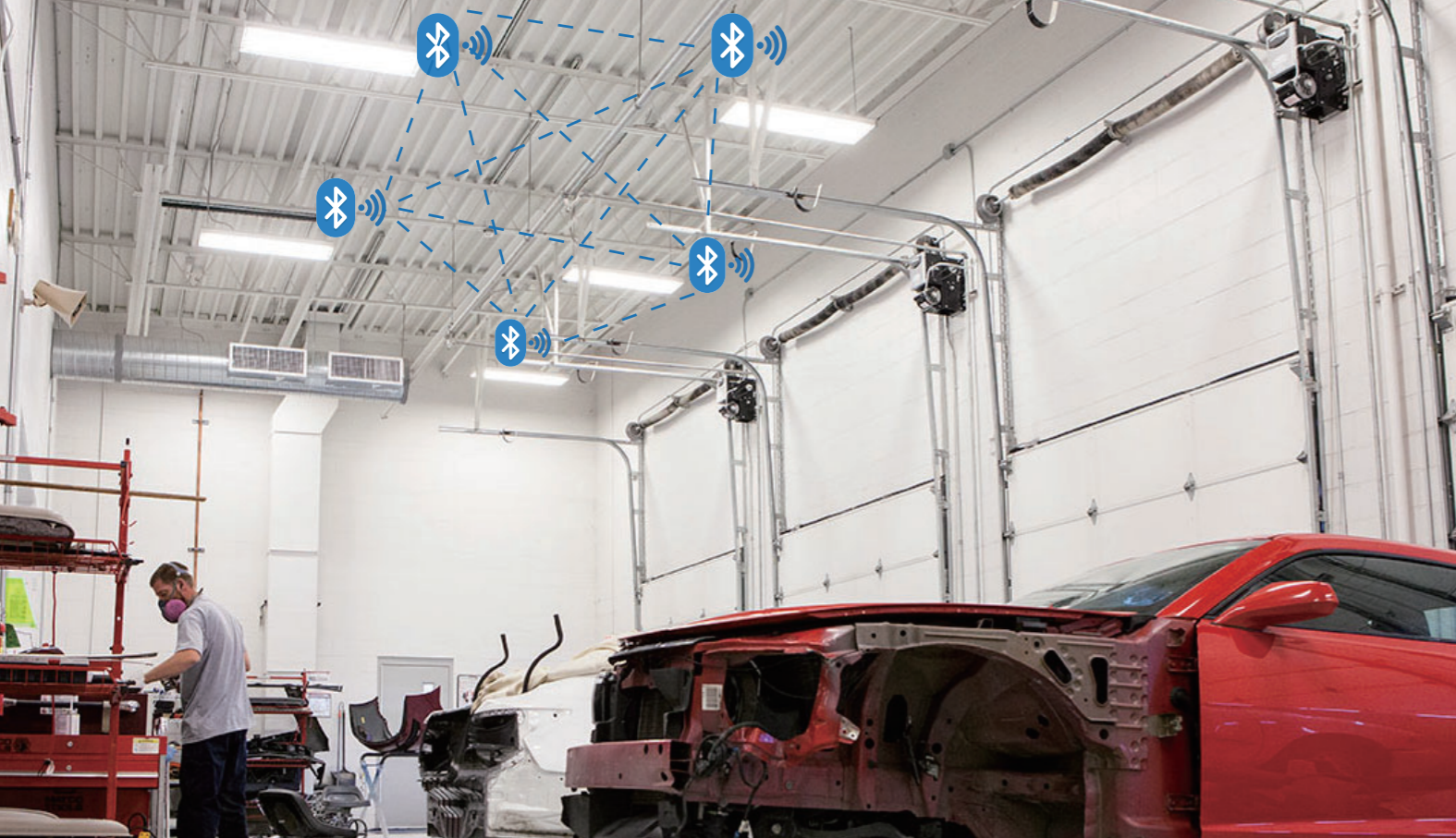
Based on TuyaAirTunes LED UFO Highbay 900A series high efficiency products up to 145LM/W. The product provides 4 installation options to adapt to different installation conditions. The one-piece die-cast aluminum shell is adopted to ensure the quality while also exerting good heat dissipation. Low UGR (<28) and plug-in microwave motion sensor. It can be used to control lighting and lanterns with MORSTAR Bluetooth APP.

FEATURES:

- Input voltage: 120V-277V, AC120V-347V available
- Power factor: > 0.95, THD: <20%
- 0-10V dimming standard; Flicker-free
- Lifetime: L70 > 100,000 hours, CRI>80
- Environmental working temperature: -22°F to 104°F (-30°to +40°)
- Stronger housing with good heat dissipation
- 4 kinds of mounting available: Ceiling with loop/ Ceiling with hook/ Wall mounting/ Pendent mounting



Item No.	Power	Input Voltage	Color Temperature	Power Factor	Luminous Flux
HHB901A-100W	100W	100-277V / 120-347V	2700K-6500K	≥0.95	14,500 lm
HHB902A-150W	150W	100-277V / 120-347V	2700K-6500K	≥0.95	21,750 lm
HHB903A-200W	200W	100-277V / 120-347V	2700K-6500K	≥0.95	29,000 lm
HHB904A-240W	240W	100-277V / 120-347V	2700K-6500K	≥0.95	34,800 lm



LED LINEAR HIGH BAY



SENSOR



PRODUCT DESCRIPTION:

The led linear high bay light is an ideal choice for high-performance, long-life replacement of HID and linear fluorescent high bay lights. Various color temperatures and light uniformity will ensure comfortable and safe conditions, thereby maximizing the productivity of warehouses, large shops and stadiums, and other industrial and commercial venues. The use of special structure and thermoelectric separation technology can increase the efficiency of the light to 135lm/W and help extend the service life. Bluetooth microwave motion sensors can be installed and combined with Morlink wireless lighting control system to achieve intelligent lighting control.

FEATURES:

- Power factor: > 0.9, THD: <20%
- 1-10V dimming standard; Flicker-free
- Samsung Led chip lifetime: L70 > 100,000 hours, CRI > 80
- Environmental working temperature: -20°C / -4°F to 50°C / 122°F
- UL certification 1598: suitable for dry and humid places
- 4000K / 5000K / 5700K provides crisp and invigorating lighting resembling daylight for warehouses, stadiums, and industries, etc.
- V-hook and chain mounting accessories included



Item No.	Power	Input Voltage	Color Temperature	Power Factor	Luminous Flux
LHB1D-80W	80W	120-277V / 120-347V	4000K / 5000K / 5700K	>0.9	10,800 lm
LHB2D-110W	110W	120-277V / 120-347V	4000K / 5000K / 5700K	>0.9	14,850 lm
LHB3D-165W	165W	120-277V / 120-347V	4000K / 5000K / 5700K	>0.9	22,275 lm
LHB4D-220W	220W	120-277V / 120-347V	4000K / 5000K / 5700K	>0.9	29,700 lm
LHB5D-225W	225W	120-277V / 120-347V	4000K / 5000K / 5700K	>0.9	30,375 lm
LHB5D-300W	300W	120-277V / 120-347V	4000K / 5000K / 5700K	>0.9	40,500 lm



PRODUCT DESCRIPTION:

Light up your outdoor area with LED Wall Pack. It is a high efficient lighting solution that provides a long-lasting and energy-saving. The rugged housing offers advanced thermal management and protection against outdoor environments without compromising aesthetics.

FEATURES:

- Easy installation
- ETL/cETL/DLC premium certificate
- Wet location rated IP65
- Emergency power 4W & operating time 1.5 hours
- Photocell and motion sensor options
- Type III distribution optics standard/Other optics available by request



Item No.	Power	Input Voltage	Color Temperature	Power Factor	Luminous Flux
EWP901B-30W	30W	120-277V / 120-347V	4000K / 5000K / 5700K	≥0.9	3900 lm
EWP906B-100W	100W	120-277V / 120-347V	4000K / 5000K / 5700K	≥0.9	13,000 lm



PRODUCT DESCRIPTION:

It is a safety isolated driver classic wall pack, 120-277VAC/120-347VAC, providing more options for different countries and applications. As the power supply and the optical parts are separated, the thermal performance is good. It can be used in building facade, commercial, industrial, retail, hospitality buildings that demand long service life and low maintenance. The sensor can be installed fast without tools and can be used in conjunction with MORSTAR Bluetooth APP to control fixtures.

LED WALL PACK



FEATURES:

- Easy installation
- Long Lifespan; Premium 2835 LED chips lasting over 50,000 hours
- ETL/cETL/DLC premium certificate
- Dimmable; Compatible with 0-10V dimming switches or lights controls
- Save up to 85% ENERGY
- Strong housing and Anti-yellow glass



Item No.	Power	Input Voltage	Color Temperature	Power Factor	Luminous Flux
EWP901E	30W	120-277V / 120-347V	4000K / 5000K / 5700K	≥0.90	375lm
EWP902E	40W	120-277V / 120-347V	4000K / 5000K / 5700K	≥0.90	500lm
EWP903E	50W	120-277V / 120-347V	4000K / 5000K / 5700K	≥0.90	625lm
EWP904E	60W	120-277V / 120-347V	4000K / 5000K / 5700K	≥0.90	750lm
EWP905E	80W	120-277V / 120-347V	4000K / 5000K / 5700K	≥0.90	1000lm
EWP906E	100W	120-277V / 120-347V	4000K / 5000K / 5700K	≥0.90	1250lm
EWP907E	120W	120-277V / 120-347V	4000K / 5000K / 5700K	≥0.90	1500lm



LED PARKING CANOPY



FEATURES:

PRODUCT DESCRIPTION:

The LED canopy light delivers up to 8,400 lumens for an energy-efficient replacement of 250W MH canopy lights. Traditional style does not detract from current building aesthetics. The smart series parking garage canopy light provides years of maintenance-free general illumination for commercial and industrial applications. The exceptional energy efficiency and fast payback, the Canopy of the Smart series is the most suitable light fixture for the parking lot solution.



Item No.	Power	Input Voltage	Color Temperature	Power Factor	Luminous Flux
EGC8/10A-28W	28W	120-277V	4000K / 5000K / 5700K	>0.9	3780 lm
EGC8/10A-40W	40W	120-277V	4000K / 5000K / 5700K	>0.9	5400 lm
EGC8/10A-60W	60W	120-277V	4000K / 5000K / 5700K	>0.9	8100 lm
EGC8/10A-70W	70W	120-277V	4000K / 5000K / 5700K	>0.9	9450 lm



LED VAPOR TIGHT LIGHT

 SENSOR



PRODUCT DESCRIPTION:

The 480 Smart Series Vapor Tight light is a highly durable and robust Tri-Proof light series designed for production areas, parking facilities, and any other applications that must deal with harsh conditions. Its Ingress Protection rating of IP69 assures that it can truly be used indoor and outdoor under all conditions. Using MorLink Bluetooth APP, through the built-in UL dual-channel smart Driver and Tuya technology Bluetooth controller, the CCT of the lamp can be seamlessly switched from 3000K to 5000K, timing, sensing, group control, 0-10V stepless dimming, etc.

FEATURES:

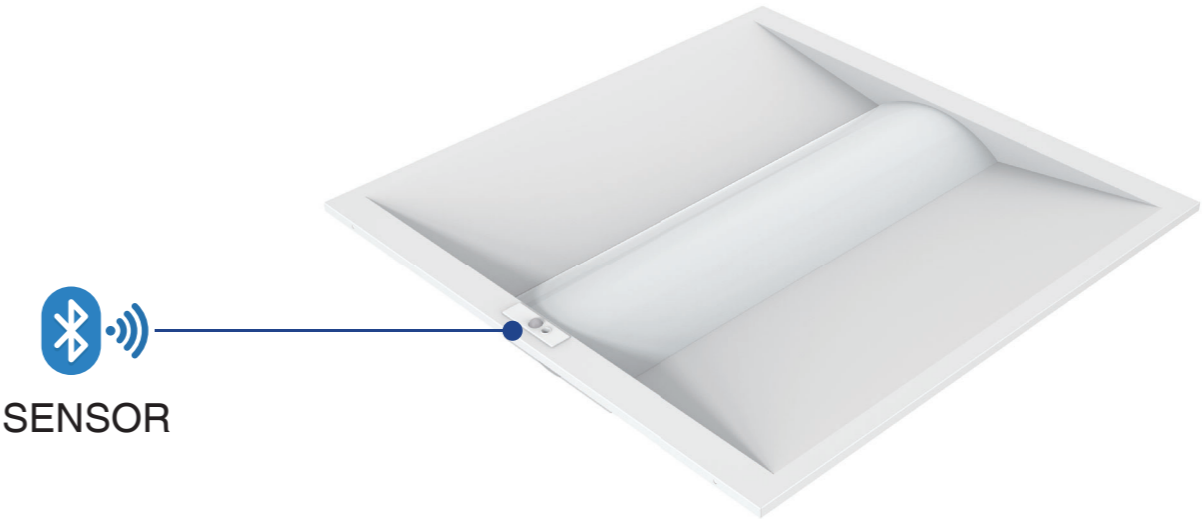
- Premium High Power LED Chips and UL dual-channel Driver
- Lumen efficacy up to 135lm/w
- Weatherproof Polycarbonate Housing and Frosted Diffuser
- Optimized design of double row and high quality of LEDs improve thermal resistance and heat dissipation
- Resistant to vibration, impact, and shock
- IP65 rated protection against the ingress of dust, other solid particulates, and low-pressure jets of directed water



Item No.	Power	Input Voltage	Color Temperature	Power Factor	Luminous Flux
HVP481A-40W	40W	120-277V	3000K / 4000K / 5000K	>0.9	5,400 lm
HVP482A-80W	80W	120-277V	3000K / 4000K / 5000K	>0.9	10,800 lm



LED TROFFER LIGHT



PRODUCT DESCRIPTION:

AirTunes LED Troffer delivers soft, glare-free, ambient lighting in popular center-basket design. The center-basket LED troffer is a low-profile design that offers a clean, versatile style and volumetric distribution. Compared with traditional light sources, the slim profile appearance and high-efficiency LED light engine can save energy and reduce maintenance costs, making it an ideal choice for new buildings. It provides a series of dark slots, which can be used in conjunction with MORSTAR Bluetooth APP to control fixtures.

FEATURES:

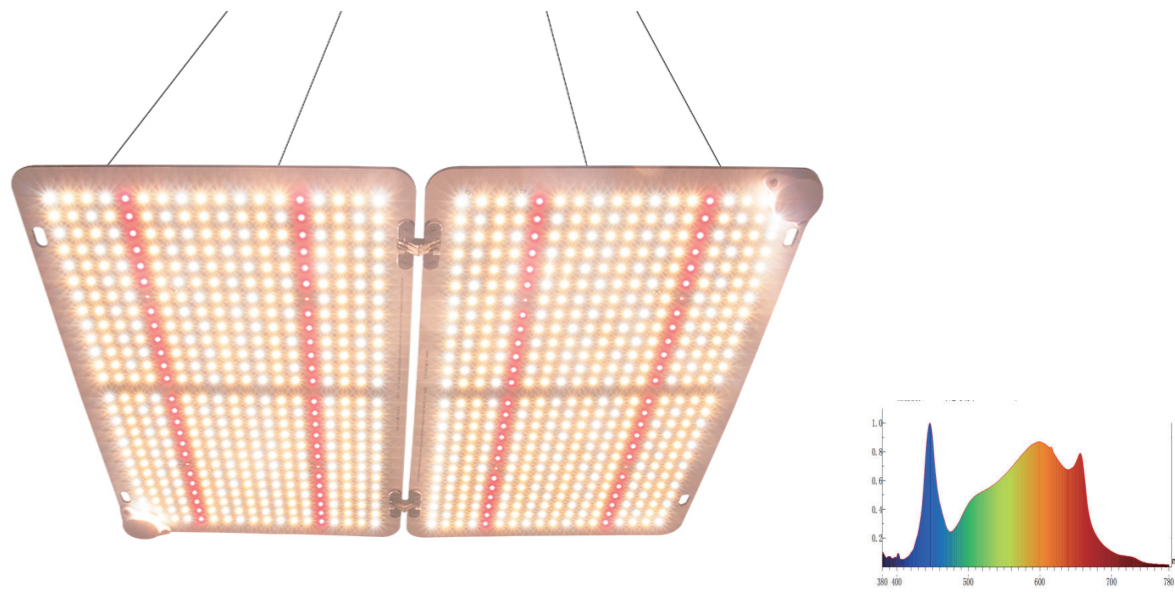
- Long-life LEDs, coupled with high-efficiency drivers, provide superior quality of illumination for extended service life
- Excellent luminaire efficacy provides significant energy savings power efficiency up 88%
- To ensure trouble-free operation, protection is provided against output over-current, output over-voltage
- Short circuit. LED boards are easily accessible from below
- Options: CCT+Power Adjustable; APP Smart control; Daylight+PIR sensor



Item No.	Power	Input Voltage	Color Temperature	Power Factor	Luminous Flux
HTF301E22CP	40W 2X2ft	100-277V	3500K / 4000K / 5000K	>0.9	5,000 lm
HTF302E24CP	50W 2X4ft	100-277V	3500K / 4000K / 5000K	>0.9	6,250 lm
HTF303A22AP	33W 2X2ft	100-277V	3500K / 4000K / 5000K	>0.9	3,750 lm
HTF304A24AP	50W 2X4ft	100-277V	3500K / 4000K / 5000K	>0.9	6,250 lm
HTF305A22AP	26W 2X2ft	100-277V	3500K / 4000K / 5000K	>0.9	3,770 lm
HTF306A24AP	40W 2X4ft	100-277V	3500K / 4000K / 5000K	>0.9	5,800 lm



LED GROW LIGHT



PRODUCT DESCRIPTION:

This is a full spectrum LED grow light idea for any plant, which means purchasing one is suitable for all growth stages. Photosynthetic rate and transpiration rate are directly affected by temperature, humidity and airflow. Therefore, full spectrum growing light improves any plant growth and helps save money on different purchases in different stages. Morstar's grow light series saves shipping costs. It has a tool-free installation. With secondary lenses inside the fixture, light can be concentrated in a cone shape to the center of the footprint and provide a high PAR. Light engines are made of extracted aluminum for better cooling.

FEATURES:

- The full spectrum light is ideal for flowering, vegetative growth, and the plant's overall development
- Spectrum unable; Provides suitable spectrum for different stages of plant growth
- For IP65 waterproof, LED grow light using glue process in surface
- No exposed wiring design makes grow lights look more smoothly
- High quality chips make grow light long expand life
- Unique design using 3MM PCB Board for great heat dissipation
- No Fan and zero noise are one of very important factors in indoor environment



Item No.	Power	Input Voltage	Color Temperature	Power Factor	PPE
HGR01G	110W	100-240V/277V	3000K / 5000K	>0.97	2.8μmol/J
HGR02G	220W	100-240V/277V	3000K / 5000K	>0.97	2.8μmol/J
HGR03G	440W	100-240V/277V	3000K / 5000K	>0.97	2.8μmol/J
HGR04G	660W	100-240V/277V	3000K / 5000K	>0.97	2.8μmol/J



PRODUCT DESCRIPTION:

Traditional HID lighting systems have always had a limitation when it came to modifying the spectral light quality. However, the use of LEDs in gardening lighting systems can create a custom spectral light quality. A grow light supplements natural daylight and raises growth light levels in order to enhance photosynthesis and thereby improve growth and quality of plants in greenhouses. The grow light is suitable for cannabis, tomatoes, cucumbers, peppers, roses and other plants. The application in indoor supplement light, the place with short outdoor lighting time and insufficient light.

LED GROW LIGHT



FEATURES:

- The grow light suitable for cannabis, tomato, cucumber, pepper, rose and other plant
- Die- casting shell brings perfect heat dissipation, simple & perfect appearance
- Adopt the integrated lens to improve the luminous efficacy and offer perfect light distribution
- Use full- spectrum Sosen driver, about double to triple of the metal lamp or the sodium lamp
- Simple structure, light weight



Item No.	Power	Input Voltage	Color Temperature	Power Factor	PPE
HGR701E	240W	100-277V	3000K / 5000K	>0.97	2.8μmol/J
HGR702E	360W	100-277V	3000K / 5000K	>0.97	2.8μmol/J
HGR703E	460W	100-277V	3000K / 5000K	>0.97	2.8μmol/J
HGR704E	650W	100-277V	3000K / 5000K	>0.97	2.8μmol/J



LED UVC GERMICIDAL LIGHT



PRODUCT DESCRIPTION:

Color temperature adjustable germicidal light can play a kind of actinic effect. The energy of ultraviolet photons is absorbed by base pairs in DNA, causing genetic material to mutate, causing bacteria to die immediately or unable to reproduce offspring to achieve the purpose of sterilization. Therefore, in the indoor scene, UVC Germicidal Troffer Light has become an inevitable choice. The UVC light source is in an enclosed space. Irradiate the accelerated airflow to eliminate the viruses. Therefore, this allows for the disinfection of the air, while ensuring that day to day activities can continue underneath that area.

FEATURES:

- The Fixture Remembers The Last Setting
- Air Circulation System with Filter
- LED Color Temperature Adjustable
- LED Brightness Adjustness
- Replaceable Filters and Tubes
- HEPA Filter Makes The Air Level Above PM2.5
- Remote Control Option (Infrared Control)
- Embedded into The Ceiling



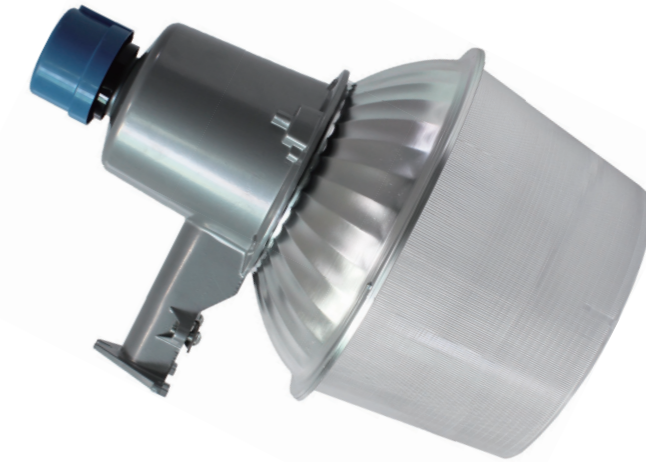
Item No.	Power	Input Voltage	Color Temperature	Power Factor	Luminous Flux
HTRUVC	135W	100-277V	3000K / 4000K / 5000K	>0.9	4800 lm



PRODUCT DESCRIPTION:

LED dusk to dawn light of IP65 protection is made of aluminum alloy, which makes the product sturdy and durable, and the power supply has good heat dissipation. Effectively prolong the service life of the product. The high-purity aluminum radiator with high thermal conductivity is specially designed to increase the heat dissipation area, improve the heat exchange efficiency of hot and cold air, and reduce the temperature. The light source of outdoor lighting LED security light ensures the stability of the product function and a longer service life.

LED DUSK TO DAWN LIGHT



FEATURES:

- Ideal replacement for outdated HPS fixtures up to 200W
- Using Bridgelux 3030 chips and high-quality drivers, fixture with light efficiency up to 120LM/W
- Die-cast aluminum housing, Fluted formed specular aluminum refractor with 12" PS/PC anti-glare cover
- Pole-mount or wall-mount options
- Mounting bracket available
- Optional NEMA twist-lock photocontrol for dusk-to-dawn operation



Item No.	Power	Input Voltage	Color Temperature	Power Factor	Luminous Flux
MC-17501A	30W	85-265V	3000K-6000K	>0.8	3600 lm
MC-17502A	40W	85-265V	3000K-6000K	>0.8	4800 lm
MC-17503A	50W	85-265V	3000K-6000K	>0.8	6000 lm
MC-17504A	60W	85-265V	3000K-6000K	>0.8	7000 lm



FEATURES:

- 9W GU24 Base LED Lamp (Normal/PIR/Bluetooth mode optional)
- Lampholder is an Impact-resistant construction design and integrated thermoforming process technology, beautiful and durable
- Matching PC frosted guard with high light transmittance, bright and soft light
- keyless Lampholder – can be used with a standard wall switch
- Pull Chain Lampholder – ON/OFF with Pull Chain
- Lampholder with leads for easy installation

PRODUCT DESCRIPTION:

Morstar's GU24 lampholder LED cabinet light is an ideal choice for high efficiency and energy saving. It can provide high-quality light sources for closets, attics and utility rooms. They have 9-watt LED bulbs, making them a popular alternative to incandescent lamps and CFL lightings.

The Bluetooth mesh mode of GU24 can be used with the APP of the intelligent system Morlink.



Item No.	Power	Input Voltage	Color Temperature	Power Factor	Luminous Flux
MS707C/CW-A	9W	120V, 60HZ	2700K/3000K/4000K/5000K	≥ 0.9	800 lm
MS707C/CW-P	9W	120V, 60HZ	2700K/3000K/4000K/5000K	≥ 0.9	800 lm
MS707C/CW-B	9W	120V, 60HZ	2700K/3000K/4000K/5000K	≥ 0.9	900 lm



PRODUCT DESCRIPTION:

The Bluetooth fixture sensor is designed for indoor applications with ceilings such as office, school. Integrated sensors capture data that is both processed locally and transmitted over the network, enabling a full suite of applications. In addition, the sensor supports Bluetooth low energy communication with tags and other BLE devices.



Item No.	Motion Sensing	Wireless Standards	Input Power	Detection Angle
MA-SASBS-01A	Passive IR	5.0 Bluetooth Mesh	10-28 VDC, >50mA	360°



PRODUCT DESCRIPTION:

The Bluetooth fixture sensor is a complete sensing and lighting control node powered by its attached light fixture. Sensor information combined with a configurable behavior profile makes the fixture sensor an integral component of an intelligent lighting control and sensing solution. With integrated wireless communications for data transmission and remote configuration as well as autonomous fixture-level control, this sensor brings advanced lighting automation to a whole new level.



Item No.	Motion Sensing	Wireless Standards	Input Power	Detection Angle
MA-SASBS-01B	Microwave Sensor	5.0 Bluetooth Mesh	12-24 VDC, >50mA	360°



PRODUCT FEATURES:

- 5.8GHz microwave motion sensor with dimmable function
- The parameters would be set by remote control or mobile APP
- Multiple sensors can be used simultaneously through wireless bluetooth networking
- Mounting height would be 15m / 49.2ft and detection range up to 16m / 52.48ft diameter
- Supporting different installation and applications, for surface mounting, traditional LED high bay with aluminium reflector or linear / trippy high bay



Item No.	Motion Sensing	Wireless Standards	Input Power	Useful Life
MA-SASBH-001A	5.8GHz Microwave Sensor	5.0 Bluetooth Mesh	120-277 VAC, 50 / 60 Hz	5 Years

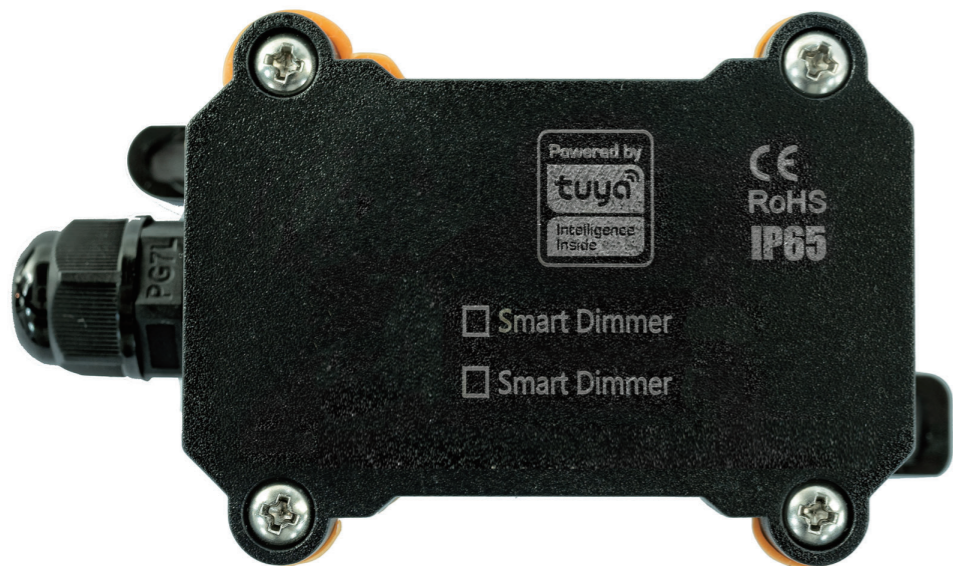


PRODUCT FEATURES:

- Wireless bluetooth networking sensor to smartly control groups of LED light without quantity limitation.
- IP65 to make it widely used no matter indoor in warehouse / parking lot / hospital or outdoors in street / gym.
- Four installation methods to meet different mounting ways.
- Remote control and smart phone setting to make it easy to set all parameters at anytime.
- Daylight function to make it more intelligent to detect the natural light to make it real smart control gear for saving energy.



Item No.	Motion Sensing	Wireless Standards	Input Power	Useful Life
MA-SASBH-001B	Daylight Sensor	5.0 Bluetooth Mesh	120-277 VAC, 50/60 Hz	5 Years



PRODUCT DESCRIPTION:

This product is a well-designed portable smart dimmer which applies to airports, factories, hotels, gyms and other places. Its simple installation, configuration, and operation allows any user to achieve significant energy savings without the usual complications. It offers you a chance to turn on/off and adjust the brightness for the LED driver by Bluetooth or Zigbee which support mesh networking.



Item No.	Adjustable Voltage	Wireless Standards	Input Power	Useful Life
MA-SADCB-01A	0-10 V	5.0 Bluetooth Mesh	10-24 VDC, >20mA	100,000 hours
MA-SADCZ-01B	0-10 V	Zigbee	10-24 VDC, >20mA	100,000 hours



PRODUCT DESCRIPTION:

This product is designed for flood light and other intelligent lighting dimmer controllers, using Zhaga BOOK18 standard interface specification, compact shape, can be free of wiring, fast installation on the lamp, shorten the assembly time, skillfully separate the lamp and control module. The product adopts Zigbee & Bluetooth 5.0 technology to realize reliable and secure wireless network communication. With Ota and SaaS functions, cloud firmware upgrade, status monitoring and remote control operations can be implemented.



Item No.	Adjustable Voltage	Wireless Standards	Input Power	Useful Life
MA-SAZGB-01A	0-10 V	5.0 Bluetooth Mesh	10-24 VDC, >20mA	100,000 hours
MA-SAZGZ-01B	0-10 V	Zigbee	10-24 VDC, >20mA	100,000 hours
MA-SAZGNB-01C	0-10 V	NB - IOT	10-24 VDC, >20mA	100,000 hours